

The QDE Courier

June 2014

Welcome

to our new students....

Jasmine Hair

Latia Bell-Gilmore

Sataya Broadbent

Logan Clark

Charlie Heness

Brandy Dowdall



Geneveive Temple is a star on the ice. She recently qualified for higher levels of competition and is off to Brisbane. All the best Geneveive. We are barracking for you.

Thank you everyone for a big term

Even though it was a short, nine week term, it was most productive with students returning work regularly. We are seeing good progress as students move to mixed modes of learning. We are hoping all enjoyed the May Gathering. It was a very packed program of activities both on and off campus. It was particularly good to have new faces and families in our midst. It can be a little daunting to come into a new environment and we appreciated your efforts to step out and come along. It's always a big thing for families to arrange themselves to they can attend for the three days. We are now planning for our September Gathering which will be held in week 8 (2-4 September) We want to claim those days now so please mark them on your calendar.

Just some housekeeping things – If you have resources at home which you are not using, please return them to the centre. Our blue bags are depleting and are no longer readily available so please return these if you have spares. Please keep us informed if any of your information changes. This may include phone numbers, emergency contact details, dates of return from overseas or finishing up with your travel. Keep in touch with your teacher and report any days of absence from DE work. These are quite permissible (even DE students and supervisors get sick!) but have to be recorded. Next term we will have some staff changes which should not affect the flow of learning for students. As these occur, we will let you know. For now, have just the best break and we will see you again 15 July. **Eloise Dews**



Laura Temple, like her sister, is a truly talented ice-skater who has great command on the ice rink. Here she is performing with her theatrical troop. Can you guess who her character is?



During the May Gathering, Jay Powell was with us for his work experience. He is a Yr 12 student at Karabar High and, in order to meet requirements of his subject load, he spent time in the distance education Centre as well as in the main school. He was such a big help and got in and did whatever he was tasked with. His help with the student computers and anything technological was just fabulous - a job that kept him very busy. He also took on a swathe of administrative tasks and managed to squeeze in some time with students. We were very fortunate to have Jay with us over a very busy week.

Attendance at school in DE

Your child, while on distance education, is enrolled as a student at a NSW Department of Education and Communities school. Each set of work represents the work your student is to complete for their learning for the length of time indicated on the pack. This is usually two weeks, or in some instances, one week.

[The regular return of work demonstrates students have been in attendance at school.](#)

Students in distance education are allowed to be absent from school for legitimate reasons! Should the work not be able to be completed for any reason, you need to inform your child's teacher. Your child may be sick or on leave for a special reason (to attend an appointment

requiring travel or for urgent family business for example). Alternatively, you, the supervisor, may be ill and not able to fulfil your role. In either instance, where work is unable to be completed, call or email or write a note so the teacher can record the absence and help you with re-organising.



Yes. They really do and they are the key reason why schools exist in communities. Are you seeking practical ideas to help you with your children? Then this is the site for you! It has great information about a range of challenges parents and kids face today which is research based and 'easy to read' information regarding the needs and make-up of diverse groups of children. **Kids matter** is a whole school approach focussing on the mental health of children in their primary years of schooling. QDE is a Kids Matter Centre providing professional development for parents and workshops for students. To learn more about Kids Matter please go to the website at <http://www.kidsmatter.edu.au/primary>.

Contacting teachers



The Centre's staff can be contacted between 8:30 AM to 3 PM Monday to Friday. Outside of these hours teachers can be contacted using either the phone and the answering machine or the email address supplied by the Department of Education and Communities. All teachers have made this email address known to their students. The Centre's email address: queanbeyp-d.school@det.nsw.edu.au can be found on the Centre's website <http://www.queanbeyp-d.schools.nsw.edu.au/> and also on the contact card supplied at enrolment.

In review..The May Gathering

By Reporter Jo



The May Gathering was a little different to previous years in that we had a much greater representation of younger students and we also encouraged all students from all categories of enrolment to join us.

Day 1. The students and staff excitedly travelled on the mini bus out to Mugga cottage where they considered how the Canberra landscape has been changed by human activity



We were all very excited to be at Mugga

We also looked at the Jeannie Baker book 'Windows' and discussed further how and why environments change before we all collected materials to create our own environmental collage, like those in the text.

Day2 We made damper around the campfire, baked it on sticks before covering it in syrup ...YUM! We also went to the Queanbeyan Museum and Printing Museum where the students and staff learnt about life, communication and media 100 years before the internet!!



Cooking up a feast in the pits again

Day 3 At Lanyon homestead we investigated the trials and tribulations of daily life without running water, washing machines, fridges, supermarkets, vacuum cleaners and motor vehicles. We also had an overarching philosophy theme which led us to



Behind the plough. Hard work it was!

many interesting questions about the concept of change and some amazing thoughts that we can follow-up as part of our school work.



Liam and the gang in the shed with the old stuff



Creating and designing was just fun

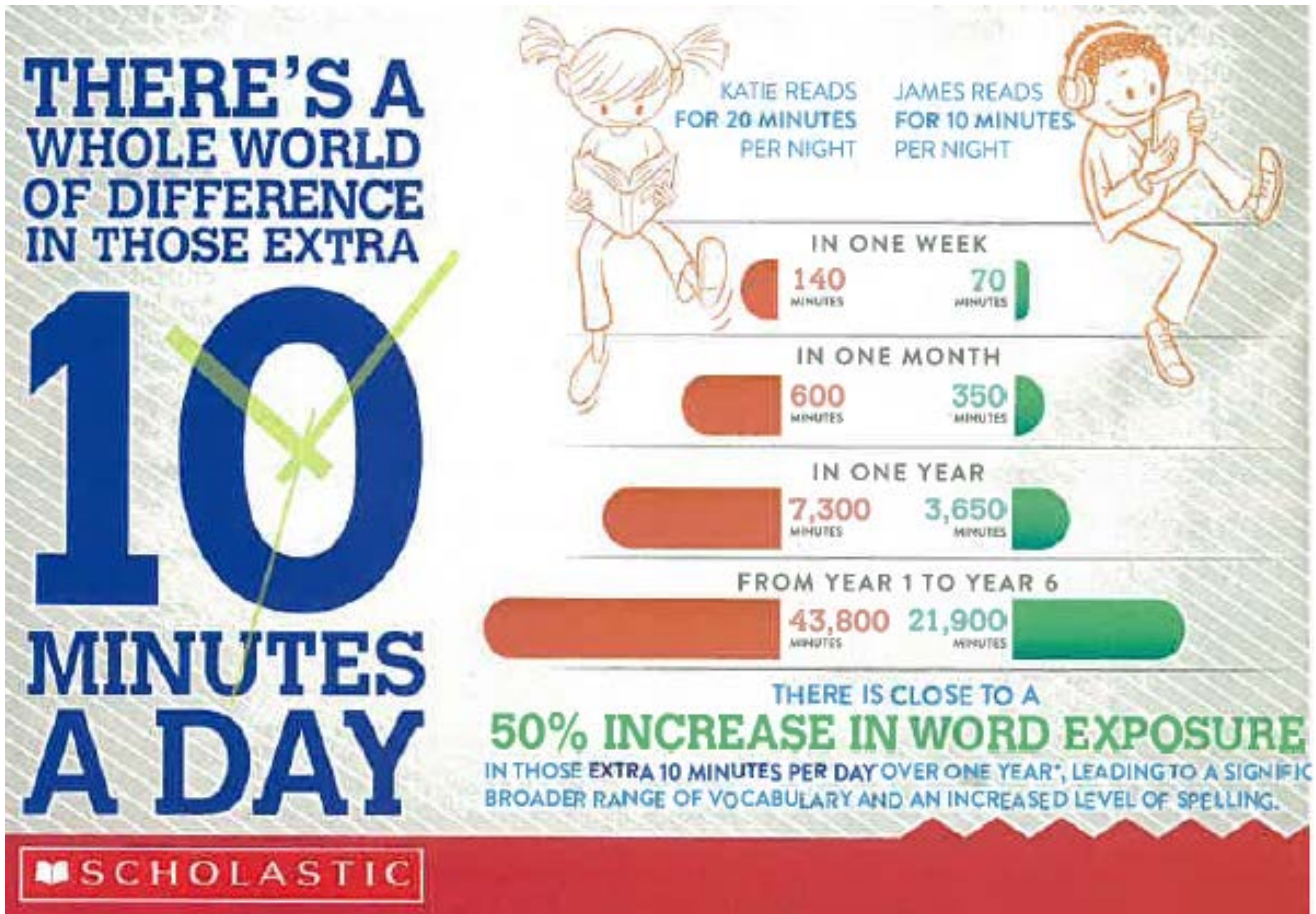
Kid pics of the May Gathering

Who can you find?





Calling all DE Kids!! Hey Kids... Just get a look at this!!



It's a little wonky and a little blurry but the message is clear. Just compare what happens when you read for 20 minutes a day instead of just 10 minutes a day! How many minutes do you read?



We are a Skoolbo School and all students who love gaming will love Skoolbo. Gaming has morphed and now you can improve your skills and have great fun too. We would like all families to download Skoolbo to their desktops (approx.250mbs). Once the game is downloaded, you don't have to be online to play. In fact, it's much better if you aren't online. You can play while you are offline and your results will be stored. Once you turn on your internet browser, results will come straight to your teacher. Its like a cloud – same thing really. 20 to 30 minutes a day will see you shoot through the roof!

Ask your teacher for your login details and get onto Skoolbo and see for yourself how good it really is.

Do you know your education portal login? You should! Ask your teacher if you don't know it. Use it to login to your own email account.

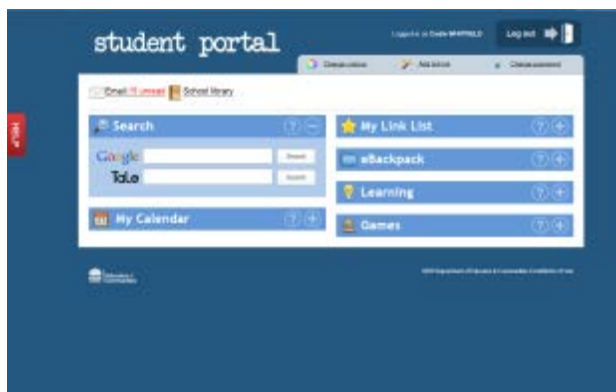
Hear Ye Hear Ye

Did you know you are able to download a great number of Adobe and Windows products free of charge? The rest of the world has to pay large sums but you are able to have these suites of products for free.



The Student Portal and Student email accounts

If you haven't already visited the 'Learning' link on your student's homepage, then please have a browse. It will be well worth doing. The InDesign program for example, costs nearly \$800 and you are able to have a DEC licenced copy for free. Now there couldn't be a better bargain than that!



Screenshot of the Student Portal homepage

We have a large number of new students who have joined us in the past few weeks or who are about to start in term 3 so this information will be important. If you are not aware of your login details, please ask your teacher.

Every student in a NSW public school has access to the Student Portal. This includes our DE students. Within 24 hours of your enrolment being finalised you will have access and your student will have their own email account.

The Student Portal

Each student has a login and a password which will take them to their own portal page. Above is a screenshot of the portal page. This page is accessed via our DE website. Go to the login tab then to student and use your unique login. This is usually first name, then a dot, then surname. Most accounts these days, are followed by a number. From this page, you are able to go to the student email account. It even tells you how many are unread.

Student email accounts

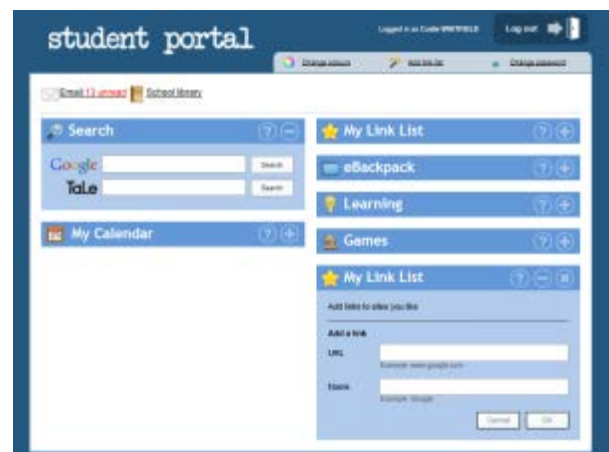
This is also your child's email account name followed by

@education.nsw.gov.au Sometimes there is also a number after the name. If I were a student, mine would be

Eloise.dews@education.nsw.gov.au

Passwords have all been issued to individual students. **The centre will use this email account to correspond with you.** It will only be where the content of correspondence is sensitive that we would contact you via your private email account. This will be our general practice from the beginning of term 2.

Once you are in the portal you will see a number of drop-down menus which all contain various sites. You can also add to special website links to 'My Link List' for easy access. There is a google bar for searching and a TaLe bar for going directly to the Primary Student TaLe website – another good place to search for something you may need.



Screenshot of 'My Link List' and all tabs

This is what the drop-down box looks like for adding your own links to the web. There is a pull-out **Help** tab at the left-hand of the home page which tells you all about the tabs and the general operation of the portal. Please refer to it to troubleshoot or learn about possibilities. Now please visit the Learning tab and just dream about what you can have for free or for a very, very nominal cost while others pay substantially

!! Fees Reminder!!

Queanbeyan Distance Education Centre is a public education facility and is part of the NSW Department of Education and Communities. We try to keep costs and charges to families as low as possible.

Queanbeyan Distance Education levies two types of fees. The first is a general service fee of \$50 per student per year. This contribution helps cover the cost of consumable materials used by each student. This fee is payable each year of a student's enrolment. It has not been our practice to invoice families for this fee. Instead, a reminder letter is sent and final notice is provided here in this newsletter.

A second resources fee of \$50 is a 'one-off' fee which is charged to cover returnable resources such as books, USB drives, maths kits and other items necessary to the delivery of student programs. When an enrolment is completed and all resources on loan have been returned, this resource deposit is fully refunded. In a case where items have been misplaced, damaged or not returned, the cost may be deducted from the resource fee before a refund is given.

An Overseas Student Fee of \$100.00 is payable at the time of enrolment and prior to the beginning of each term. *Exemptions under this category only applies to students where hard-copy mail is forwarded to a locked or diplomatic bag within Australia OR where a family elects to receive and send work wholly electronically.*

Payment of fees, as explained in the enrolment package, is a condition of enrolment and of continuing enrolment. Fees can be paid either by cheque, money order, cash or direct deposit. We do not have EFTPOS facilities. Receipts for payments received are provided.

Further information about fees can be obtained by contacting our office on (02) 6299 2966. Special circumstances are considered with regard to the payment of fees. Please discuss this with the centre manager at the time of your student's interview.



Dropbox

We have been using Dropbox for a while now as it is a reliable cloud server providing a substantial amount of free space and through which we can deliver and receive student work electronically and immediately. It is, however, a little tricky to install and use initially. Please be assured that it will be worth the effort. To make these first steps as easy as possible, please go to:

<http://www.slideshare.net/ceheit3/dropbox-tutorial-for-pc> or click on either icon below

For PC users



For Mac users



Here you will learn how to install, use and take advantage of the features of Dropbox. Your teacher will be referring you to it or you are already using it. If you would like further help or just can't seem to fathom it or get it to work, please call Eloise or email and we can go step by step.

Important Term Dates

*Students last day for Term 2 is
Friday, 27 June 2014*

*Students first day for Term 3 is
Tuesday, 15 July 2014*